

## Protection & Preservation

Lamination will extend the life of any document, especially if it is frequently handled. Lamination protects a document from dirt and damage and gives it a durable, wipe-clean surface which is totally sealed and waterproof.

## Enhancement

The laminating pouch bonds with the surface of the document, so that it looks brighter and cleaner. Text appears crisper while colours are enhanced or subdued, depending whether a gloss or matt finish is chosen.

## Security

Any document is tamper-proof once it has been sealed within the laminating pouch. It is impossible to amend or change a laminated document nor can it be removed from the laminated seal.

## Rexel Laminating Pouches

Rexel Laminating Pouches are compatible with Rexel branded and most other laminating machines. Only the best quality materials are used in their manufacture and all sizes have rounded corners to ensure safe handling and provide a more attractive finish.

## Carrier-free Machines

'Carrier-free' machines are used without a carrier, which makes laminating large quantities of documents less time-consuming. However, a carrier protects valued documents from coming into contact with any glue or dust inside the laminator and its use is recommended for an exceptionally pristine result.

The document to be laminated is simply placed inside the laminating pouch and fed through the laminator.

# Rexel Laminating Range

The huge growth in low cost colour printers and the wider access to DTP software has led to a massive improvement in the quality of presentation material. Customers and colleagues alike expect well-presented documents and signage. Lamination enhances the colours of inkjet and laser prints as well as photographs and other documents giving them a more professional finish. The beautifully styled, top quality Rexel laminators will help protect preserve and enhance all your important or frequently handled documents, at home or in the office.



All Rexel laminators have a 2 year guarantee.



## Home & Hobby Range

This range of personal laminators offers outstanding value for money, producing excellent results at low cost.



## Small Office / Home Office

This range of laminators is easy to use. These attractively styled machines give superb results without the need for a carrier. Offering excellent value for money, they are ideal machines for home or office use.



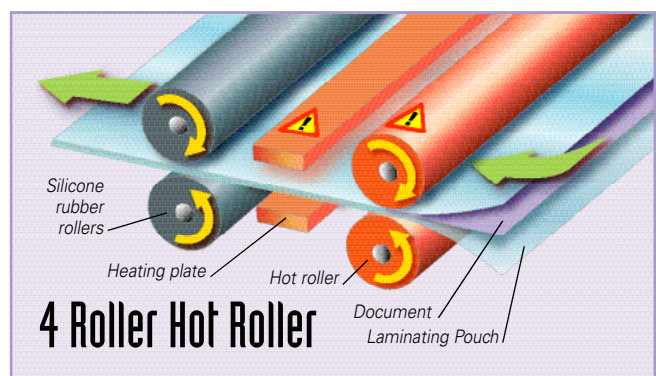
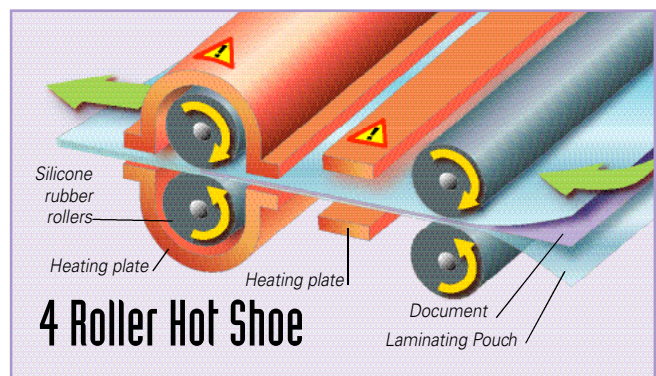
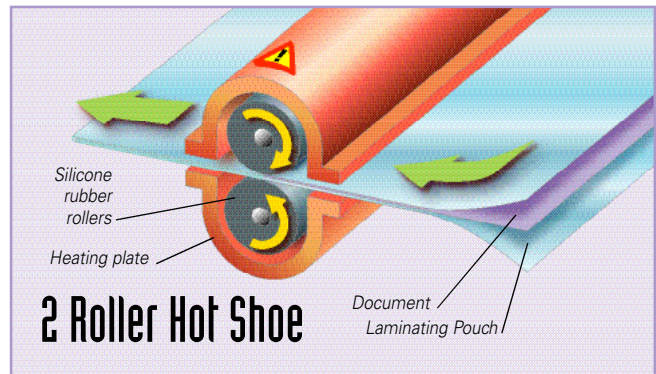
## Office Range

This range of stylish laminators was developed following two years of research into what users really want from an office laminator. The result is an outstanding combination of innovative design and advanced features which provide the perfect laminating solution within the corporate environment.



## Ultra Performance Range

These dynamic machines combine short warm-up cycles, superfast throughput speeds (up to 120cm/min) and convenient pre-set controls ensure the best results time after time for a unique performance package.



# LS & LH Laminating Series



## LS 115 Laminator



- Identity badge and photo laminator
- 112mm entry accepts ID size and standard pouches up to A6 size
- 'Power-on' and green 'ready' lights
- Handles pouches up to 360 (2 x 180) micron
- Photo quality lamination results
- Fixed speed (15 cm/min) and temperature
  - Carrier-free design for simplicity
  - Starter pack is included

LS115 Laminator



Simple operation



Ideal for badges

## LH 240



- Home and hobby laminator
- 240mm entry accepts pouch sizes from ID to A4
  - Handles pouches up to 360 (2 x 180) micron thickness (up to A7 size) and up to 250 (2 x 125) micron thickness (up to A4 size)
- Laminates photos
- 'Power on' and green 'ready' light
- Fixed speed (28 cm/min) and temperature
- Cold setting for self-seal pouches
- Carrier free for ease of use
- Supplied with starter pack



Ready to use light

	LS115	LH240
SKU Code	2100667	2100669
Rollers	2	2
Carrier free		
Maximum Pouch Size	A6	A4
Entry Width	112mm	240mm
Maximum Thickness (microns)	360 (2 x 180)	360 (2 x 180)
Temperature Control	Fixed	Fixed
Speed Control	Fixed	Fixed
Dimensions (H x W x Dmm)	71 x 236 x 121	91 x 390 x 162
Weight (Kg)	1.0	2.9
A4 sheet lamination time	-	1m 7 sec



LH240 Laminator

# LV Laminating Series



**PLEASE NOTE**

Laminating Accessories are on page 22

## LV250 HS Laminator



- Ideal for home and office use
- 250mm entry width accepts pouches from ID/Badge to A4 size
- Takes pouches up to 250 (2 x 125) micron thickness
- Also handles 360 (2 x 180) micron pouches up to A7 size
- Fast warm up time with 'ready' light
- Fixed speed – a fast 35 cm per minute
- Variable temperature control, includes a cold setting for self-seal pouches
- Complete with a starter pack of pouches
- Release feature to help remove misfed pouches



LV250 HS Laminator



Excellent results



Temperature Control



LV340 HS Laminator

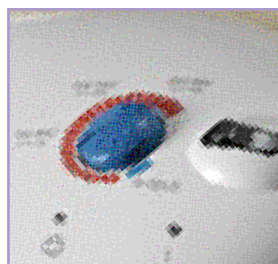
## LV340 HS Laminator



- Ideal for home and office use
- 340mm entry width accepts pouches from ID/Badge to A3 size
- Takes pouches up to 250 (2 x 125) micron
- Also handles 360 (2 x 180) micron pouches up to A7 size
- Fast warm up time with 'ready' light
- Fixed speed – a fast 35 cm per minute
- Variable temperature control, includes a cold setting for self-seal pouches
- Complete with a starter pack of pouches
- Release feature to help remove misfed pouches



Easy to use



Simple control panel

	LV250 HS	LV340 HS
SKU Code	2100904	2100906
Rollers	2	2
Carrier free		
Maximum Pouch Size	A4	A3
Entry Width	250mm	340mm
Maximum Pouch Thickness (microns)	360 (2 x 180)	360 (2 x 180)
Temperature Control	Variable	Variable
Speed Control	Fixed	Fixed
Dimensions (H x W x Dmm)	145 x 508 x 253	145 x 586 x 282
Weight (Kg)	2.4	3.0
A4 sheet lamination time	55 sec	55 sec



Carrier required



Carrier free



Carrier optional



Photo-friendly



Reverse function

# LP Laminating Series



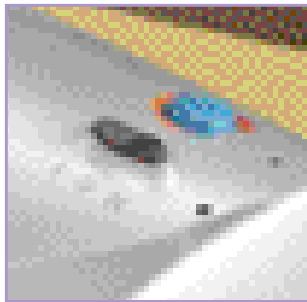
LP25 HS Laminator



Fast warm up time



Fast speed in use



Simple control panel

## LP 25 HS



- High quality office laminator
- 4-roller mechanism
- Laminates photos
- 250mm entry accepts pouch sizes from ID up to A4
- Handles pouches up to 360 (2 x 180) micron thickness
- Fast warm-up time with 'ready' light
- Fixed speed – a fast 55cm per minute!
- Variable temperature control including a cold setting for self-seal pouches
- Reverse function to help clear misfed pouches
- Carrier-free operation
- Comes complete with a generous starter pack of assorted pouches

## LP 35 HS



- High quality office laminator
- 4-roller mechanism
- Laminates photos
- 340mm entry accepts pouch sizes from ID up to A3
- Handles pouches up to 360 (2 x 180) micron thickness
- Fast warm-up time with 'ready' light
- Fixed speed – an exceptionally fast 55cm per minute!
- Variable temperature control including a cold setting for self-seal pouches
- Reverse function to help clear misfed pouches
- Carrier-free operation
- Comes complete with a generous starter pack of assorted pouches



LP35 HS Laminator

# LX Laminating Series



**PLEASE NOTE**

Laminating Accessories are on page 22

## LX50



- Premium laminator for busy offices
- 4 roller laminating system with fast warm-up in only 2-3 minutes
- 350mm entry width accepts pouch sizes from ID to A3
- Extra fast speed (up to 80cm/min) for pouches up to 500 (2 x 250) microns, saves time in use
- May be used with Carrier, or Carrier Free
- Variable temperature control
- LCD display featuring quality graphic symbols
- Includes a cold setting for self-seal pouches
- Reverse feature for accidental mis-feeds
- Includes generous starter pack of pouches



LX50 Laminator



LX55 Laminator

## LX55



- Premium office laminator
- 4 roller laminating system with fast 2-3 minute warm-up
- 350mm entry width accepts pouch sizes from ID to A3
- Ultra fast speed (up to 120cm/min) for pouches up to 500 (2 x 250) microns.
- Variable speed and temperature controls with pre-sets for popular pouch thickness'
- May be used with Carrier, or Carrier Free
- LCD display featuring quality graphic symbols
- Includes a cold setting for self-seal pouches
- Quick reverse feature for accidental mis-feeds
- Watchdog energy saver activates after 10 minutes inactivity
- Includes generous starter pack of pouches



Ultra high performance machine

	LP25 HS	LP35 HS	LX50	LX55
SKU Code	2100971	2100973	2101060	2101062
Rollers	4	4	4	4
Carrier free			Optional	Optional
Maximum Pouch Size	A4	A3	A3	A3
Entry Width	250mm	340mm	350mm	350mm
Maximum Pouch Thickness (microns)	360 (2 x 180)	360 (2 x 180)	500 (2 x 250)	500 (2 x 250)
Temperature Control	Variable	Variable	Variable	Variable
Speed Control	Fixed	Fixed	Fixed	Variable
Dimensions (H x W x D)	500 x 225 x 125	580 x 225 x 130	560 x 265 x 140	560 x 265 x 140
Weight (Kg)	5.5	6.4	8.2	8.2
A4 sheet lamination time	33 sec	33 sec	23 sec	15sec



Simple LCD display



Carrier required



Carrier free



Carrier optional



Photo-friendly

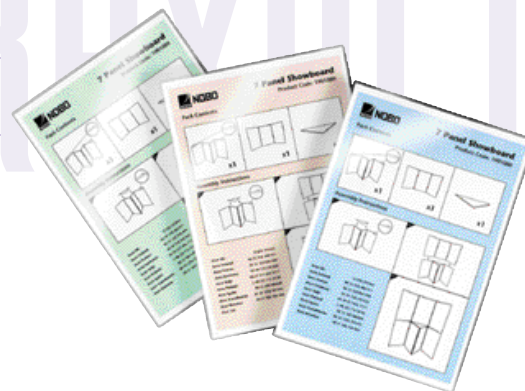


Reverse function

# Rexel Laminating Pouches

## Pouch Finishes

Standard gloss finish produces enhanced, rich colours for a bright, clear, high shine appearance. The matt finish results in more subtle colours and a non-reflective surface.



### A3 Gloss Finish

Size	Finish	Thickness	Pack of 25	Pack of 100
A3	Gloss	150 (2 x 75) micron	41617	41616
A3	Gloss	200 (2 x 100) micron	-	46311
A3	Gloss	250 (2 x 125) micron	41619	41618
A3	Gloss	360 (2 x 180) micron	41620	-

### A4 Gloss Finish

Size	Finish	Thickness	Pack of 25	Pack of 100
A4	Gloss	150 (2 x 75) micron	41622	41621
A4	Gloss	200 (2 x 100) micron	-	46310
A4	Gloss	250 (2 x 125) micron	41624	41623
A4	Gloss	360 (2 x 180) micron	41625	-

### Matt Finish A4/A3

Size	Finish	Thickness	Pack of 25	Pack of 100
A4 non-reflective	Matt	150 (2 x 75) micron	41662	44626
A4 non-reflective	Matt	250 (2 x 125) micron	41663	-
A3 non-reflective	Matt	150 (2 x 75) micron	41661	41660

### A5 Gloss Finish

Size	Finish	Thickness	Pack of 25	Pack of 100
A5	Gloss	150 (2 x 75) micron	41650	41653
A5	Gloss	250 (2 x 125) micron	-	41651

### A6/A7 Gloss Finish

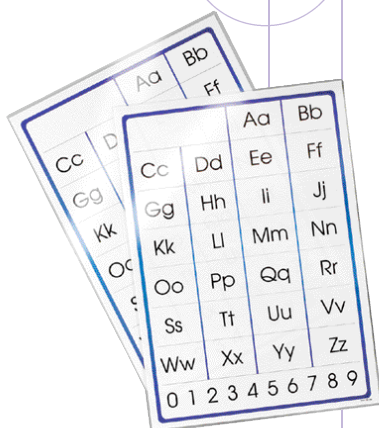
Size	Finish	Thickness	Pack of 50	Pack of 100
A6	Gloss	150 (2 x 75) micron	-	41668
A7	Gloss	250 (2 x 125) micron	41669	-

### Credit Card/Badge

Size	Finish	Thickness	Pack of 50
Credit Card (54 x 86mm)	Gloss	250 (2 x 125) micron	41670
Credit Card (54 x 86mm)	Gloss	360 (2 x 180) micron	41608
IBM card (59 x 83mm)	Gloss	360 (2 x 180) micron	41609
Key Card (63 x 98mm)	Gloss	360 (2 x 180) micron	41610
Badge (67 x 98mm)	Gloss	360 (2 x 180) micron	41611

Lamination downloads available from [www.createandlaminate.co.uk](http://www.createandlaminate.co.uk)

Matt pouches are ideal for use in schools and colleges as they provide a non-reflective finish



# Laminating Accessories

**PLEASE NOTE**  
Lamination downloads available from [www.createandlaminate.co.uk](http://www.createandlaminate.co.uk)

## Pre-punched pouches

These gloss pouches have a border pre-punched for use with all standard-sized ring binders.



Pre-punched



Photopouches

## Self-adhesive pouches

These gloss pouches have a self-adhesive backing to give a secure fixing for use as laminated signage.

### Pre-punched A4

Size	Finish	Thickness	Pack of 25	Pack of 100
A4 pre-punched	Gloss	150 (2 x 75) micron	41665	41664
A4 pre-punched	Gloss	250 (2 x 125) micron	-	2101275

### Self-adhesive A4

Size	Finish	Thickness	Pack of 25	Pack of 100
A4 self-adhesive back	Gloss	150 (2 x 75) micron	-	41666

## Rexel Photopouches

These specially constructed pouches produce excellent, 'bubble-free' results on photographs and other hard to laminate material.

### Photopouches

Size	Finish	Thickness	Pack of 50
6" x 4"	Gloss	200 (2 x 100) micron	2100156
7" x 5"	Gloss	200 (2 x 100) micron	2100157
10" x 8"	Gloss	200 (2 x 100) micron	2100158
A4	Gloss	200 (2 x 100) micron	2100159

## Rexel Pouch Selection Pack

A selection of 80 of the most popular laminating pouches for home and office use in one, convenient pack.

### Rexel Pouch Selection Pack

#### Contents: 80 pouches

50 x A4 gloss, 10 x A4 matt & 10 x A4 gloss pre-punched pouches (2 x 75 (150) micron) plus 5 x credit card size & 5 x bag tag size, (2 x 125 (250) micron) & 5 plastic loops

**2100230**



Pouch Selection Pack



Luggage Tag Kit

Size	Finish	Thickness	Pack of 25	Pack of 50
Bag Tag Kit	Gloss	250 (2 x 125) micron	41674	
Pre punched luggage tag pouches (65 x 108mm) and plastic loops				
Luggage Tag Kit	Gloss	360 (2 x 180) micron	41675	
Badge Kit	Gloss	250 (2 x 125) micron	41676	
Pre punched badge pouches (67 x 98mm) and lapel clips				
Neckchains (30" long)				41613
Neckchains fit through a hole or slot in a laminate and are used to wear a badge round the neck				
Lapel Clips				41614
Lapel clips attach through a slot in the laminate and are used to attach badges to clothing				
Hand Slot Punch			41615 each	
Punch to make slots for neckchains and lapel clips				

## Rexel Laminating Kits & Accessories



# Laminator Overview Table

Rexel La



**LS115 Laminator**  
2100667



**LH240 Laminator**  
2100669



**LV250 HS Laminator**  
2100904



**LV340 HS Laminator**  
2100906



**LP25 HS Laminator**  
2100971



**LP35 HS Laminator**  
2100973



**LX50 Laminator**  
2101060

**LX55 Laminator**  
2101062

# Laminating Range

Roller info	Carrier option	Maximum pouch size	Entry width	Maximum thickness (microns)	Temperature control	Preset temperature control	Speed control	Lamination time	Reverse function	Photo friendly	LCD display
		A6	112mm	2 x 180 (360)	Fixed	Fixed		-			
		A4	240mm	2 x 180 (360)	Fixed	Fixed	1 min 7 sec				
		A4	250mm	2 x 180 (360)	Variable	Fixed	55 sec	Release			
		A3	340mm	2 x 180 (360)	Variable	Fixed	55 sec	Release			
		A4	250mm	2 x 180 (360)	Variable	Fixed	33 sec				
		A3	340mm	2 x 180 (360)	Variable	Fixed	33 sec				
		A3	350mm	2 x 250 (500)	Variable		Fixed	23 sec			
		A3	350mm	2 x 250 (500)	Variable		Variable	15 sec			



Carrier required



Carrier free



Carrier optional



Photo-friendly



Reverse function